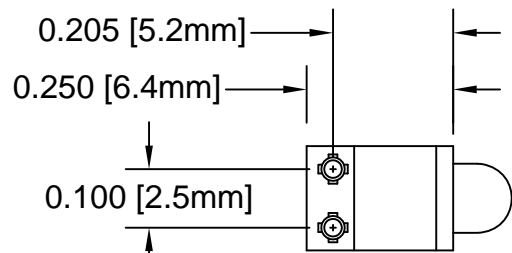
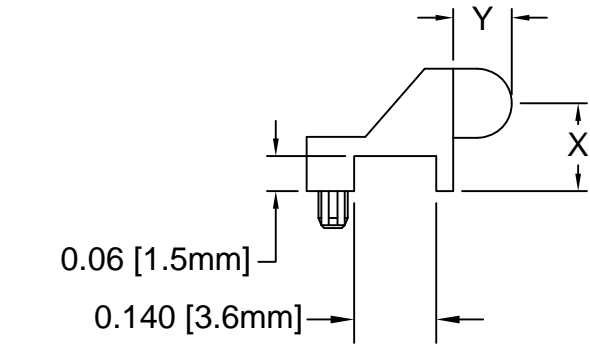
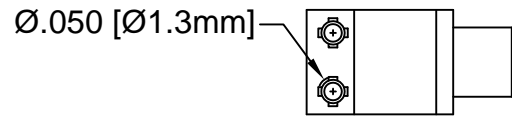


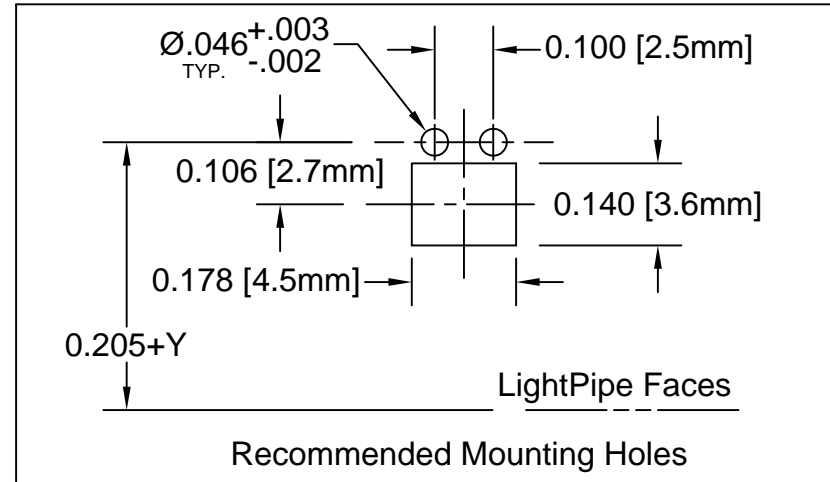
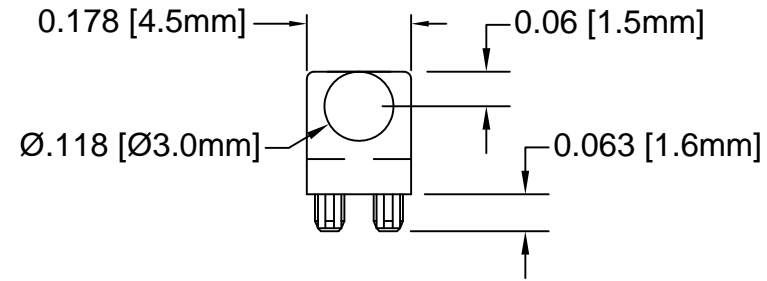
REV.	DESCRIPTION	DATE	APPROVED
E	Added Part Offering List & Removed Material Note	10/11/13	G. W.
F	Added P/Ns onto Offering List	10/31/13	G. W.
G	Edit Dimension Typo on Part Offering List, P.3	11/25/13	G. W.
H	Added Color Options, Sheet #4	02/02/16	J. C.
J	Added SLP3-350-200-F & SLP3-350-350-F, P.2	08/25/16	J. C.



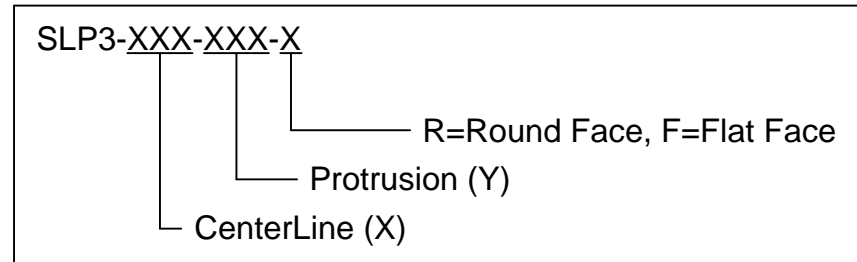
SLP3-XXX-XXX-R  
ROUND FACE



SLP3-XXX-XXX-F  
FLAT FACE



PART NUMBER DESIGNATION


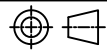


- ALL DIMENSIONS IN INCHES UNLESS OTHERWISE SPECIFIED
- MATERIAL: POLYCARBONATE, 94V-0, CLEAR.
- GENERAL SPECIFICATIONS: BIVAR MOLDED COMPONENT SPECIFICATION BV00-E101.

STANDARD TOLERANCE (UNLESS OTHERWISE SPECIFIED)		BIVAR®	
DECIMALS	ANGULAR	4 THOMAS, IRVINE, CA. 92618	
.X ± .1	X° ± 1°	TEL: (949) 951-8808 FAX: (949) 951-3974	
.XX ± .01		<b>TITLE:</b> LIGHT PIPE	
.XXX ± .005		90° VARIABLE CENTERLINE	
DESIGNED: <b>M. Chen</b>	DATE: <b>04/14/03</b>	<b>PART NO:</b> SLP3-XXX-XXX-X	REVISION: <b>J</b>
CHECKED: <b>D. Green</b>	DATE: <b>04/14/03</b>	<b>CAGE CODE :</b> 32559	<b>SHEET #</b> 1 OF 4
CAD GENERATED DOCUMENT. DO NOT MEASURE DRAWING.			


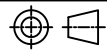
REV.	DESCRIPTION	DATE	APPROVED
	SEE SHEET #1		

STANDARD OFFERING LIST			
PART NUMBER	X DIMENSION	Y DIMENSION	FACE
SLP3-200-100-F	0.200" [5.1mm]	0.100" [2.5mm]	FLAT FACE
SLP3-200-100-R	0.200" [5.1mm]	0.100" [2.5mm]	ROUND FACE
SLP3-200-150-F	0.200" [5.1mm]	0.150" [3.8mm]	FLAT FACE
SLP3-200-150-R	0.200" [5.1mm]	0.150" [3.8mm]	ROUND FACE
SLP3-200-200-R	0.200" [5.1mm]	0.200" [5.1mm]	ROUND FACE
SLP3-200-250-F	0.200" [5.1mm]	0.250" [6.4mm]	FLAT FACE
SLP3-250-100-F	0.250" [6.4mm]	0.100" [2.5mm]	FLAT FACE
SLP3-250-100-R	0.250" [6.4mm]	0.100" [2.5mm]	ROUND FACE
SLP3-300-100-F	0.300" [7.6mm]	0.100" [2.5mm]	FLAT FACE
SLP3-300-100-R	0.300" [7.6mm]	0.100" [2.5mm]	ROUND FACE
SLP3-300-250-F	0.300" [7.6mm]	0.250" [6.4mm]	FLAT FACE
SLP3-300-250-R	0.300" [7.6mm]	0.250" [6.4mm]	ROUND FACE
SLP3-300-450-F	0.300" [7.6mm]	0.450" [11.4mm]	FLAT FACE
SLP3-300-450-R	0.300" [7.6mm]	0.450" [11.4mm]	ROUND FACE
SLP3-350-100-F	0.350" [8.9mm]	0.100" [2.5mm]	FLAT FACE
SLP3-350-100-R	0.350" [8.9mm]	0.100" [2.5mm]	ROUND FACE
SLP3-350-200-F	0.350" [8.9mm]	0.200" [5.1mm]	FLAT FACE
SLP3-350-350-F	0.350" [8.9mm]	0.350" [8.9mm]	FLAT FACE
SLP3-400-100-F	0.400" [10.2mm]	0.100" [2.5mm]	FLAT FACE
SLP3-400-100-R	0.400" [10.2mm]	0.100" [2.5mm]	ROUND FACE
SLP3-400-250-F	0.400" [10.2mm]	0.250" [6.4mm]	FLAT FACE
SLP3-400-450-R	0.400" [10.2mm]	0.450" [11.4mm]	ROUND FACE

STANDARD TOLERANCE (UNLESS OTHERWISE SPECIFIED)		 4 THOMAS, IRVINE, CA. 92618 TEL: (949) 951-8808 FAX: (949) 951-3974	
DECIMALS	ANGULAR		
.X ± .1	X° ± 1°		TITLE: LIGHT PIPE 90° VARIABLE CENTERLINE
.XX ± .01			DESIGNED: <b>M. Chen</b>
.XXX ± .005		CHECKED: <b>D. Green</b>	DATE: <b>04/14/03</b>
		PART NO: <b>SLP3-XXX-XXX-X</b>	REVISION: <b>J</b>
		CAGE CODE : <b>32559</b>	SHEET # <b>2 OF 4</b>
CAD GENERATED DOCUMENT. DO NOT MEASURE DRAWING.			

REV.	DESCRIPTION	DATE	APPROVED
	SEE SHEET #1		

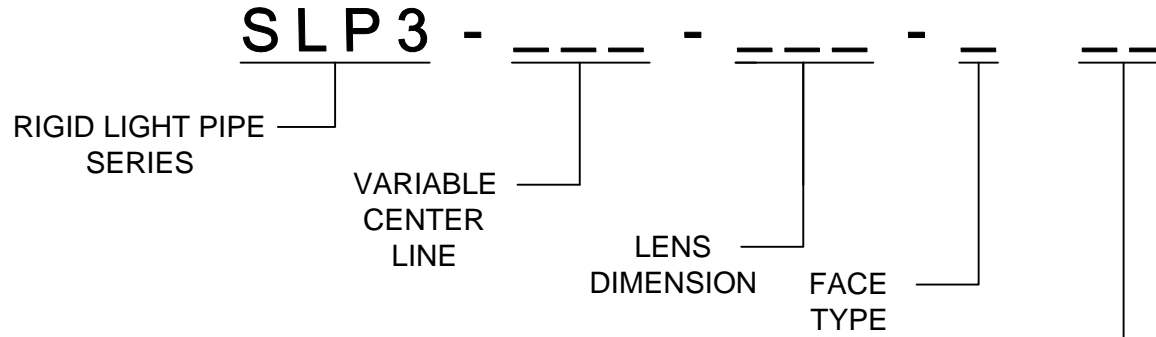
STANDARD OFFERING LIST			
PART NUMBER	X DIMENSION	Y DIMENSION	FACE
SLP3-450-100-F	0.450" [11.4mm]	0.100" [2.5mm]	FLAT FACE
SLP3-450-100-R	0.450" [11.4mm]	0.100" [2.5mm]	ROUND FACE
SLP3-500-100-F	0.500" [12.7mm]	0.100" [2.5mm]	FLAT FACE
SLP3-500-100-R	0.500" [12.7mm]	0.100" [2.5mm]	ROUND FACE
SLP3-500-250-F	0.500" [12.7mm]	0.250" [6.4mm]	FLAT FACE
SLP3-500-250-R	0.500" [12.7mm]	0.250" [6.4mm]	ROUND FACE
SLP3-500-400-R	0.500" [12.7mm]	0.400" [10.2mm]	ROUND FACE
SLP3-500-450-R	0.500" [12.7mm]	0.450" [11.4mm]	ROUND FACE
SLP3-550-100-F	0.550" [14.0mm]	0.100" [2.5mm]	FLAT FACE
SLP3-550-100-R	0.550" [14.0mm]	0.100" [2.5mm]	ROUND FACE
SLP3-600-100-F	0.600" [15.2mm]	0.100" [2.5mm]	FLAT FACE
SLP3-600-100-R	0.600" [15.2mm]	0.100" [2.5mm]	ROUND FACE
SLP3-600-450-R	0.600" [15.2mm]	0.450" [11.4mm]	ROUND FACE
SLP3-650-100-F	0.650" [16.5mm]	0.100" [2.5mm]	FLAT FACE
SLP3-650-100-R	0.650" [16.5mm]	0.100" [2.5mm]	ROUND FACE
SLP3-700-100-F	0.700" [17.8mm]	0.100" [2.5mm]	FLAT FACE
SLP3-700-100-R	0.700" [17.8mm]	0.100" [2.5mm]	ROUND FACE
SLP3-700-450-R	0.700" [17.8mm]	0.450" [11.4mm]	ROUND FACE

STANDARD TOLERANCE (UNLESS OTHERWISE SPECIFIED)		 4 THOMAS, IRVINE, CA. 92618 TEL: (949) 951-8808 FAX: (949) 951-3974	
DECIMALS	ANGULAR		
.X ± .1	X° ± 1°		TITLE: LIGHT PIPE 90° VARIABLE CENTERLINE
.XX ± .01			DESIGNED: <b>M. Chen</b>
.XXX ± .005		CHECKED: <b>D. Green</b>	DATE: <b>04/14/03</b>
		PART NO: <b>SLP3-XXX-XXX-X</b>	REVISION: <b>J</b>
		CAGE CODE : <b>32559</b>	SHEET # <b>3</b> OF <b>4</b>
CAD GENERATED DOCUMENT. DO NOT MEASURE DRAWING.			

**OTHER AVAILABLE COLORS**

\* SEE TABLE FOR ORDERING INFORMATION



REV.	DESCRIPTION	DATE	APPROVED
	SEE SHEET #1		



COLOR	Order Code
BLUE	BE
BLACK	BK
GREEN	GN
GRAY	GY
RED	RD
YELLOW	YW

NOTE: LEAVE ORDER CODE BLANK IF NO COLOR IS DESIRED.

4. PARTS ARE DYED TO COLOR UPON REQUEST.

STANDARD TOLERANCE ( UNLESS OTHERWISE SPECIFIED ) DECIMALS      ANGULAR		 4 THOMAS, IRVINE, CA. 92618 TEL: (949) 951-8808    FAX: (949) 951-3974	
			
DESIGNED: <b>K. Aukshunas</b>	DATE: <b>01/25/16</b>	TITLE: LIGHT PIPE 90° VARIABLE CENTERLINE	
CHECKED: <b>J. Chiang</b>	DATE: <b>01/25/16</b>	PART NO: <b>SLP3-XXX-XXX-X</b>	REVISION: <b>J</b>
		CAGE CODE : <b>32559</b>	SHEET # <b>4 OF 4</b>
CAD GENERATED DOCUMENT. DO NOT MEASURE DRAWING.			